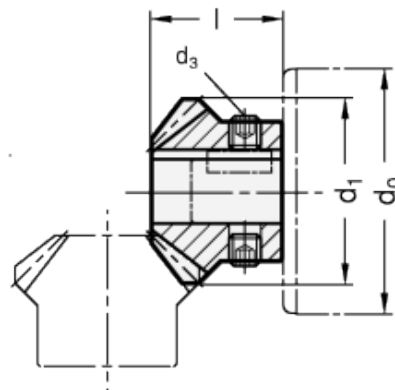
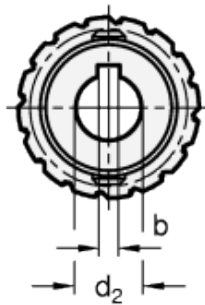


GN 297

Angular gears



Type R



Type L



technical informations

Material

Steel hardened, teeth milled.

Types

- Type R: Bevel gear wheel, right-hand pitch
- Type L: Bevel gear wheel, left-hand pitch
- Type W: Set of bevel gears. 2 bevel gears

1 x right-hand pitch, 1 x left-hand pitch
 - Type T: Set of bevel gears, 3 bevel gears,
 1 x right-hand pitch, 2 x left-hand pitch

Features and applications

Bevel gear wheels GN 297 are used for angular / T-gears in connection with linear actuators / transfer units and housings GN 298.

The spiral bevel facilitates both setting the desired clearance and locating the correct position of the bevel gears. Also, gears set up this way run with extremely low noise levels.

Two bevel gears are needed for an angular gear, three bevel gears are needed for a T-gear. These are available as set in type W resp. type T.

Please note that only bevel gears with different pitches can be paired. The transmission ratio is always 1:1 because the bevel gears always have the same number of teeth.

Accessories

- Housings GN 298
- Drive units GN 391
- Transfer units GN 391
- Linear actuators GN 291
- Linear actuators GN 292
- Linear actuators GN 293

Standard Elements	Main dimensions						Weight
Description	d ₀	d ₁	d ₂ H7 Bore with keyway	b	d ₃	l	g
GN 297-14.5-K6-R	18	14.5	K 6	2	M 4	11	9
GN 297-25-K8-R	30	25	K 8	2	M 6	19	36
GN 297-33-K12-R	40 / 50	33	K 12	4	M 6	23.5	59
GN 297-14.5-K6-L	18	14.5	K 6	2	M 4	11	9
GN 297-25-K8-L	30	25	K 8	2	M 6	19	36
GN 297-33-K12-L	40 / 50	33	K12	4	M 6	23.5	59
GN 297-14.5-K6-W	18	14.5	K 6	2	M 4	11	9
GN 297-25-K8-W	30	25	K 8	2	M 6	19	36
GN 297-33-K12-W	40 / 50	33	K 12	4	M 6	23.5	59
GN 297-14.5-K6-T	18	14.5	K 6	2	M 4	11	9
GN 297-25-K8-T	30	25	K 8	2	M 6	19	36
GN 297-33-K12-T	40 / 50	33	12	4	M 6	23.5	59



STANDARD MACHINE ELEMENTS WORLDWIDE